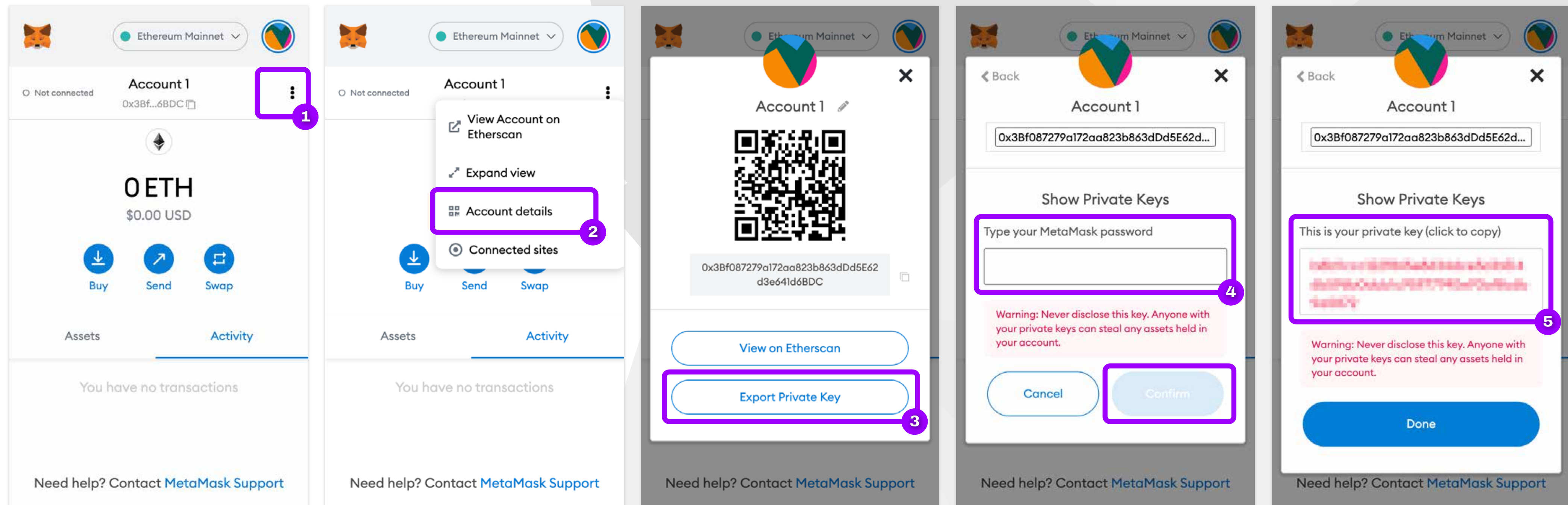




HOW TO IMPORT METAMASK TO KAIKAS

from METAMASK



1

Click on the menu
at the upper right corner

2

click on the
“Account details” button

3

Click
“Export private key”

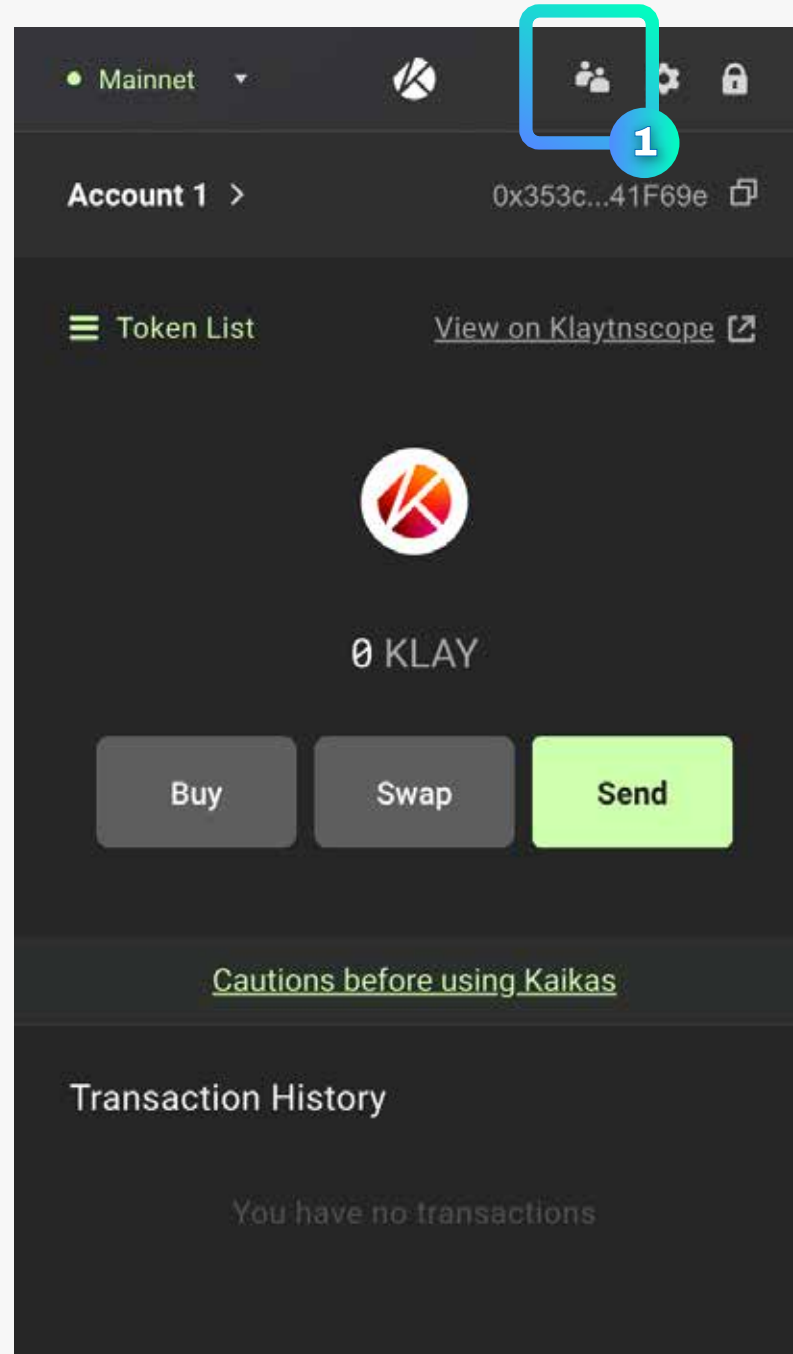
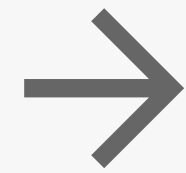
4

Enter your password
and click “Confirm”

5

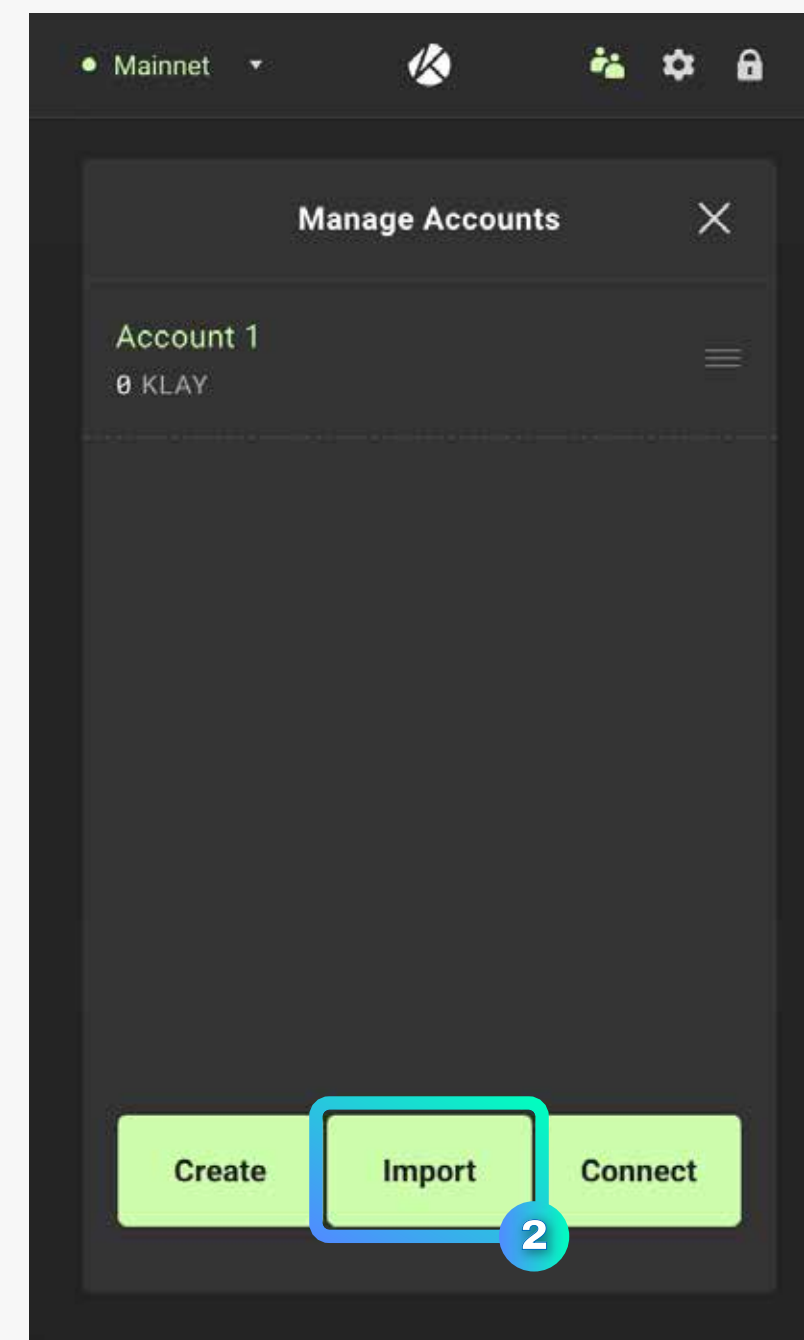
Click to copy revealed private key
and save it somewhere safe.

to KAIKAS



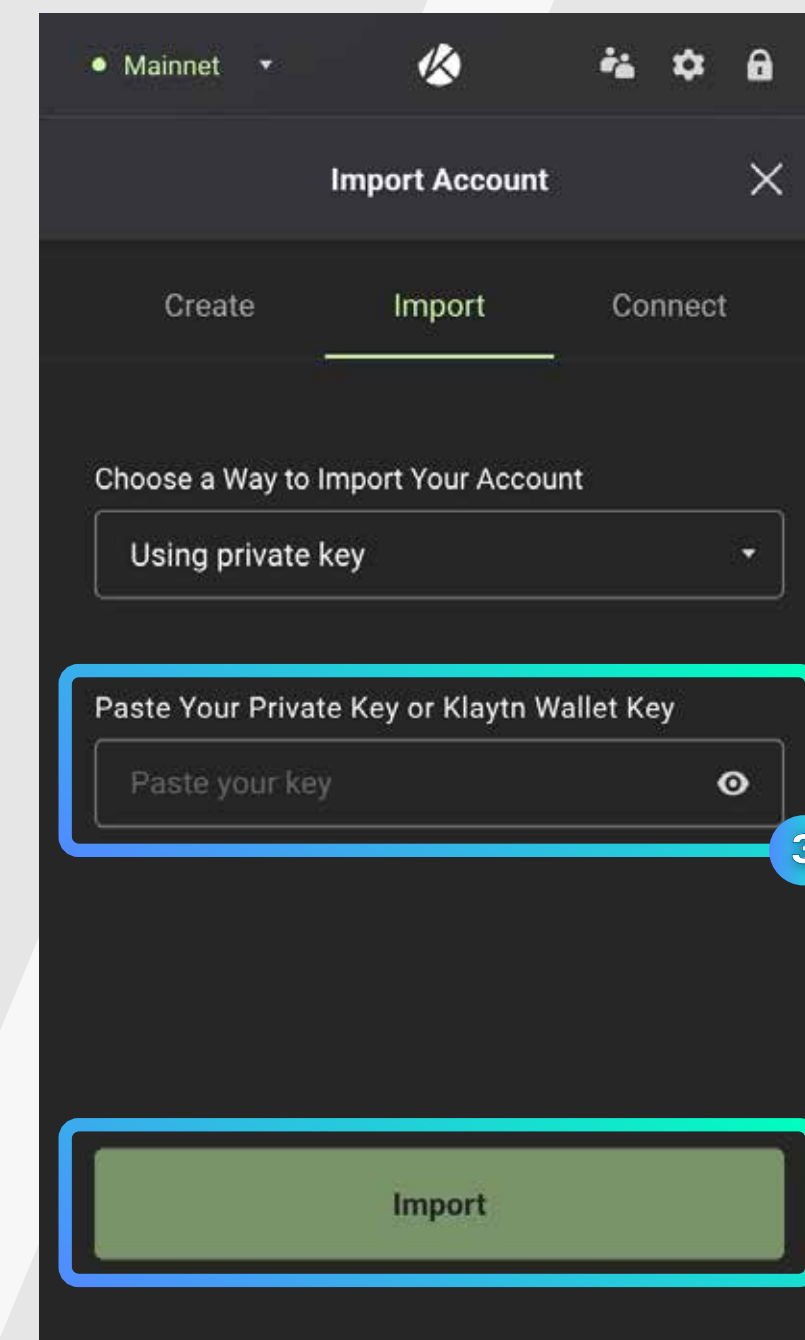
1

Open Kaikas wallet
and click “Manage account”
at the upper right corner



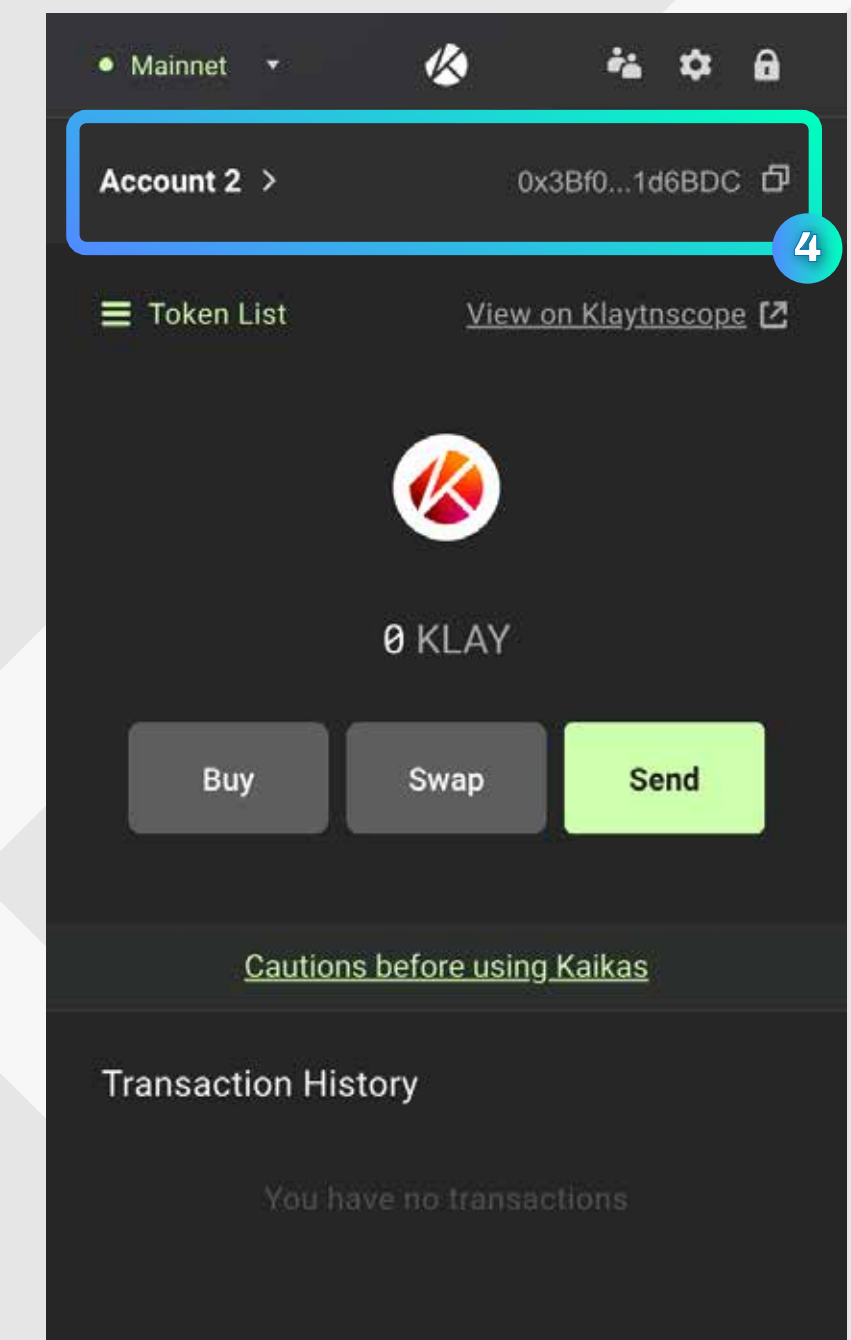
2

Click “Import” button



3

Paste your private key
copied from Metamask Wallet
and click “Import”



4

The account in the Metamask wallet
has been copied to Kaikas wallet